



83 Scripps Drive Sacramento, CA 95825

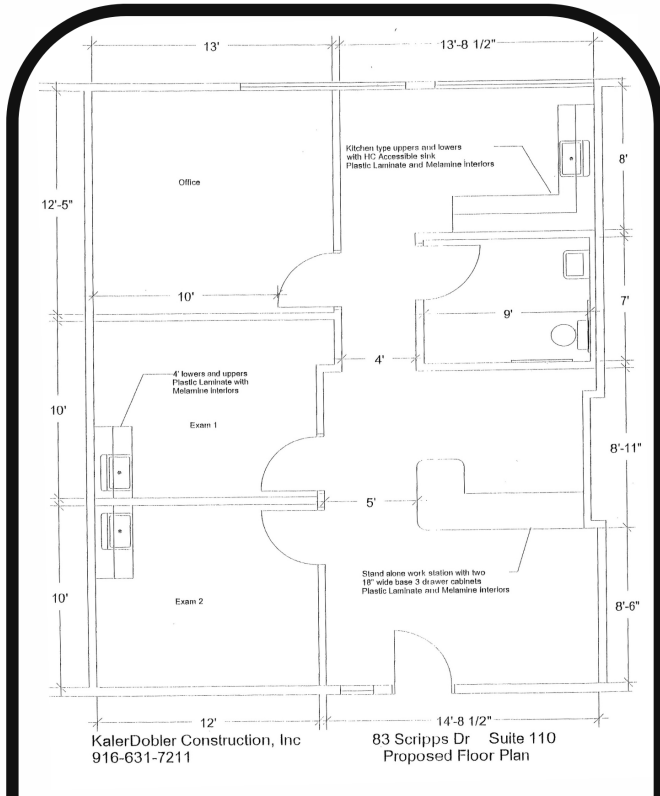
Property Highlights

- Turnkey Medical space
- 1047 RSF and 1713 RSF
- \$2.35 to \$2.50 per SF
- Both spaces located on the 1st floor
- Plentiful parking
- New lobby
- New common areas
- Great common tenant lounge
- Owners on site = responsive

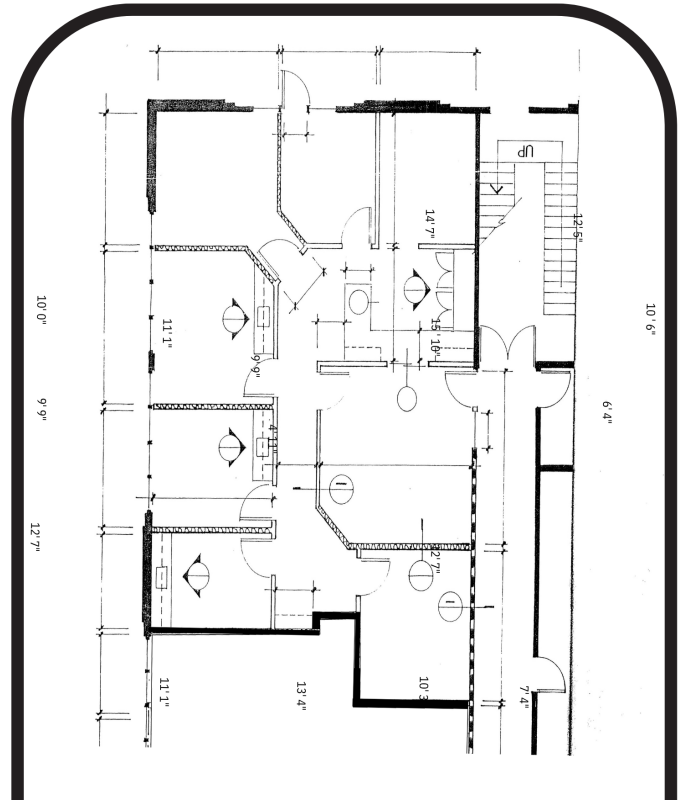
SMALL MEDICAL SPACES FOR LEASE

BFBA Building
83 Scripps Drive | Sacramento, CA 95825

Suite 110 1012 SF



Suite 130 1,713 SF



Suite Walkthrough: <https://rb.gy/y6k8ua>

Suite Walkthrough: <https://youtu.be/p3eL9-AMeso>

