

FOR SALE

**Development Opportunity +/- 1.32 OPMU
(Office Professional Mixed Use)
Commercial Zoned Land Available**

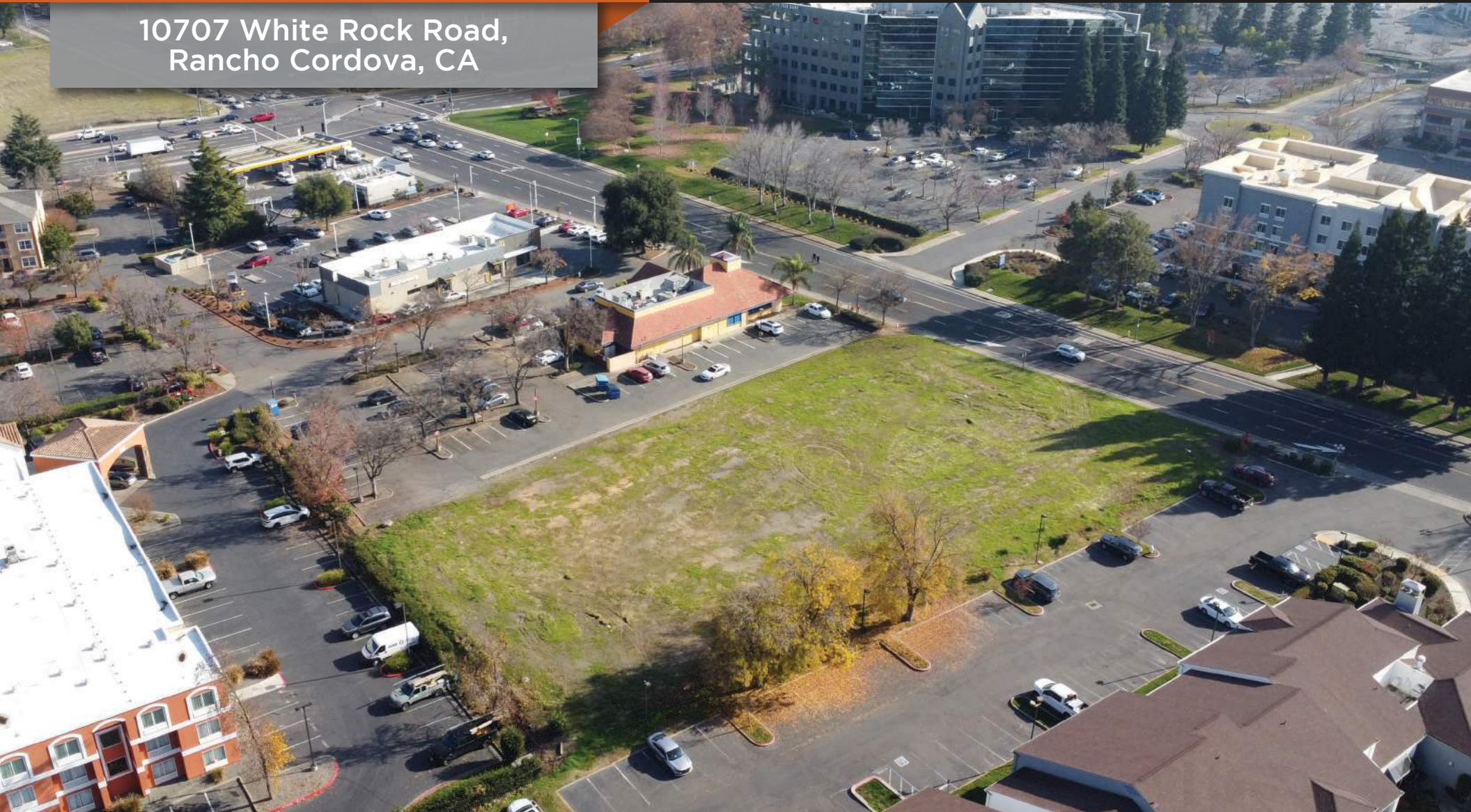
**10707 White Rock Road,
Rancho Cordova, CA**



PDF

exp[®]
COMMERCIAL

GLOBAL EXPERIENCE — LOCAL PERSPECTIVE™



916-714-8012 | www.PDF-USA.com

CalDRE #02134436

OVERVIEW

PDF powered by eXp Commercial is pleased to present this approximate 1.32 AC parcel for sale southwest of Zinfandel Drive and Highway 50 in Rancho Cordova, CA. This infill opportunity is located within the Rancho Cordova market, and is surrounded by hotels, service stations, and class A office and retail centers. There are also dense residential developments within 2 miles of this site. This high exposed parcel is right off the Zinfandel Drive exit which sees almost 145,000 cars daily.

PROPERTY HIGHLIGHTS

- +/- 1.32 AC Infill Opportunity Available for Sale
- Purchase Price - \$1,450,000
- Average Daily Traffic Counts of Almost 145,000
- Zoning: Office Professional Mixed Use (city of Rancho Cordova)
- Permitted Uses: Car wash, Restaurant, Caretaker housing, Indoor Fitness/Sports Facility, Religious/Community Assembly, Hotel/Motel, Medical/Dental Services, Neighborhood Market
- Parcel Number: 072-0210-099-0000

AREA DEMOGRAPHICS

POPULATION	1 MILE RADIUS	3 MILE RADIUS	5 MILE RADIUS
2024 Population	20,364	81,090	216,886
2028 Population Projection	21,471	83,483	223,057
2024 Household Income (Average)	\$81,950	\$89,832	\$104,918
2024 Household Income (Median)	\$70,936	\$71,455	\$81,207

MAJOR DEVELOPMENT AND PROJECTS IN THE AREA

Rio Del Oro - Specific Plan

- Total dwelling units 12,189
- Location: Northeast of Sunrise Blvd and Douglas Rd
- Developer: Gencorp Realty and Elliott Homes
- Housing Type: A variety of types, styles and price points

Sunridge - Specific Plan Projects

- Total dwelling units 4,097
- Location: Southwest corner of Douglas Rd and Rancho Cordova Pkwy
- Developer: Montelena Douglas, LLC and Premier Homes, and more
- Housing Type: Single family detached

The Ranch

- Total dwelling units 1,329
- Location: East of Rancho Cordova Pkwy, approximately 1/2 mile south of Douglas Rd
- Developer: K. Hovnanian Homes
- Housing Type: Single family detached (traditional and active adult)

Suncreek - Specific Plan Projects

- Total dwelling units 4,702
- Location: East of Rancho Cordova Pkwy and South of North Campus Rd
- Developer: Callahan, and more
- Housing Type: A variety of types, styles and price points



SURROUNDING AREA MAP



LOCATION OVERVIEW

Rancho Cordova, CA (Sacramento MSA)

Rancho Cordova, located in Sacramento County, California, is a vibrant and growing city with a rich history and a promising future. Nestled along the American River, Rancho Cordova offers a mix of urban amenities and picturesque landscapes. The city boasts a strategic location, situated just 12 miles east of downtown Sacramento, providing easy access to the state capital's cultural attractions, employment opportunities, and recreational offerings. Home to a diverse community, Rancho Cordova is known for its friendly neighborhoods, excellent schools, and a robust business environment. The Mather Field Airport, a former military airfield turned general aviation facility, adds a unique touch to the city's character. With a thriving business community, ample parks and recreational spaces, and a commitment to community development, Rancho Cordova is an ideal place for both residents and businesses alike. Explore the dynamic blend of history, nature, and modern conveniences that make Rancho Cordova a standout destination in the Sacramento region.

Source: CoStar - Market Analytics



CONFIDENTIALITY & DISCLAIMER NOTICE

The information contained in the following Marketing Brochure is confidential. The information is intended to be reviewed only by the party receiving it from eXp Commercial (PDF). The information shall not be made available to any other party without the written consent of PDF. This Marketing Brochure has been prepared to provide a summary to prospective purchasers, and to initiate only a preliminary level of interest in the subject property. The information contained shall not substitute a thorough due diligence investigation. PDF makes no warranty or representation, with respect to the income or expenses for the subject property, the future projected financial performance of the property, the size and square footage of the property and improvements of the subject property. The information contained in this Marketing Brochure has been obtained from sources we believe to be reliable; however, PDF has not verified, and will not verify, any of the information contained herein, nor has PDF conducted any investigation regarding these matters and makes no warranty or representation whatsoever regarding the accuracy or completeness of the information provided. All potential buyers must take the appropriate measures to verify all of the information set forth herein.

FOR MORE INFORMATION

Paul Frank

916-240-4012 mobile

Paul@pdf-usa.com

CalDRE #01112160

Jon Bias

916-508-9556 mobile

Jon@pdf-usa.com

CalDRE #01998325

Cam Iwasa

916-247-8747 mobile

Cam@pdf-usa.com

CalDRE #02201282