

# Property Summary

1256 W Winton Ave, Hayward, CA 94545

INDUSTRIAL CONDO FOR SALE



## PROPERTY DESCRIPTION

Discover an exceptional investment opportunity in the thriving Hayward area with this Industrial / Industrial Condo property. Boasting an ideal location in Hayward, CA, this property offers convenient access to key transportation routes and is situated within a dynamic industrial hub. With a strategic location in the heart of Hayward, this property presents an unparalleled opportunity for investors seeking an industrial real estate asset with immense potential for growth and success. Explore the possibilities and secure your stake in this prime industrial property today.

This industrial condo space at 2,206 square feet with approximately 20% office space and plenty of available parking. Perfect for an investor looking to fill tenant or owner-operator looking for a space to run their business. Zoned for Industrial Limited, this location affords the ability for a variety of uses in the heart of the bay. Nearby I-800 at Winton Ave's Average Daily Traffic is approximated at 278,000.

## OFFERING SUMMARY

Sale Price:	\$799,000
Lot Size:	2.16 Acres
Building Size:	2,206 SF

DEMOGRAPHICS	0.3 MILES	0.5 MILES	1 MILE
Total Households	608	1,449	4,770
Total Population	1,558	4,712	16,304
Average HH Income	\$149,556	\$177,652	\$139,165

Steven Johnson

707.297.5200

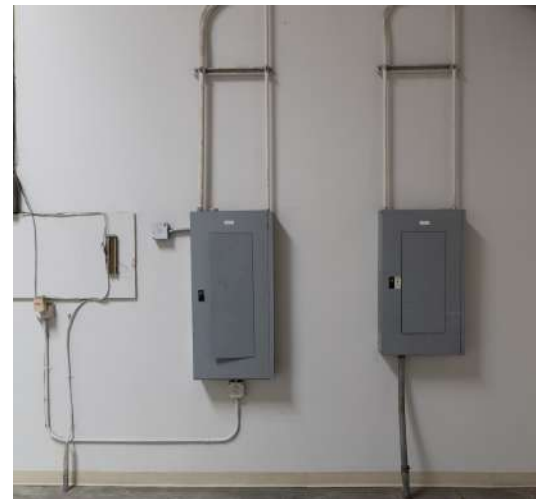
steven.johnson@expcommercial.com



# Additional Photos

1256 W Winton Ave #7, Hayward, CA 94545

FOR SALE



Steven Johnson

707.297.5200

steven.johnson@expcommercial.com



eXp Commercial, LLC, its direct and indirect parents and their subsidiaries (together, "We") obtained the information above from sources believed to be reliable, however, We have not verified its accuracy and make no guarantee, warranty or representation, expressed or implied, about such information. The information contained above is submitted subject to the possibility of errors, omissions, price changes, rental or other conditions, prior sale, lease or financing, or withdrawal without notice. Any projections, opinions, assumptions or estimates of the information contained above or provided in connection therewith, either expressed or implied, are for example only, and they may not represent current or future performance of the subject property. You, together with your tax and legal advisors, should conduct your own thorough investigation of the subject property and potential investment.

# Location Map

1256 W Winton Ave #7, Hayward, CA 94545

FOR SALE



Steven Johnson

707.297.5200

steven.johnson@expcommercial.com



eXp Commercial, LLC, its direct and indirect parents and their subsidiaries (together, "We") obtained the information above from sources believed to be reliable, however, We have not verified its accuracy and make no guarantee, warranty or representation, expressed or implied, about such information. The information contained above is submitted subject to the possibility of errors, omissions, price changes, rental or other conditions, prior sale, lease or financing, or withdrawal without notice. Any projections, opinions, assumptions or estimates of the information contained above or provided in connection therewith, either expressed or implied, are for example only, and they may not represent current or future performance of the subject property. You, together with your tax and legal advisors, should conduct your own thorough investigation of the subject property and potential investment.